



COMPANY CATALOGUE

2024



ABOUT US

General Petrol, established at 2011 in Istanbul, is a specialized firm in the fields of gas station equipment supply and engineering services. General Petrol carries out businesses as both producer and distributors in its main area of activity, which are petroleum equipments and engineering. General Petrol, established at 2011 in Istanbul, is a specialized firm in the fields of gas station equipment supply and engineering services. General Petrol carries out businesses as both producer and distributor in its main area of activity, which are petroleum equipment and engineering.



Franklin Fueling Systems

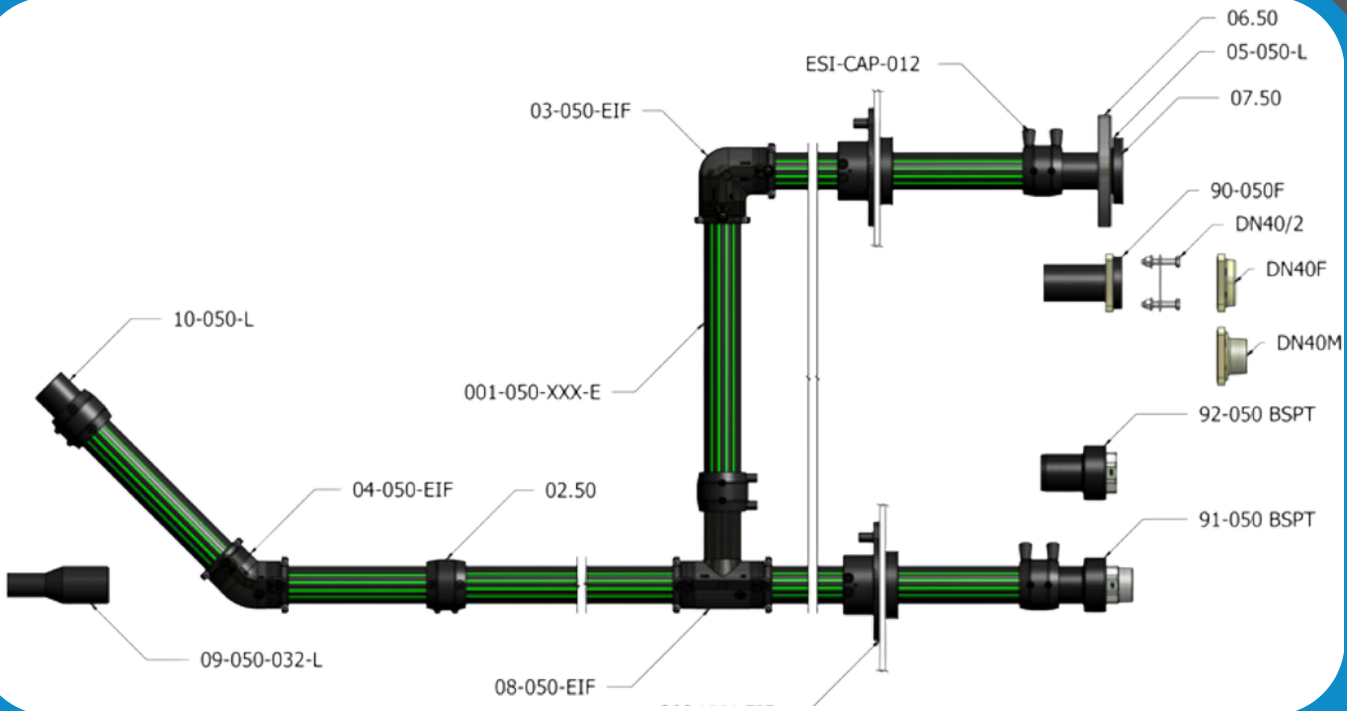
ELECTROFUSION PIPEWORK

UPP® pipework utilizes the advanced electrofusion welding process to effectively bond system components including pipework and containment together into one, watertight system.

UL UPP® pipe is offered in 1½", 2", 3", and 4" diameters and a variety of stick and coil sizes.
EN UPP® pipe is offered in 32mm, 50mm, 63mm, 90mm, 110mm, and 160mm diameters and a variety of stick and coil sizes.



PRIMARY PIPE SYSTEM MAP



WELDING MACHINE EF1



VACUUM TESTING

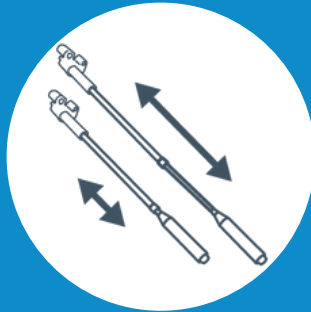
SUBMERSIBLE TURBINE PUMPS

FE PETRO® brand submersible pumping systems set the standard by which all other fuel pumping systems are measured. With best-in-class flow rates and backed by a long history of dependability, FE PETRO® pumps are responsible for delivering fuel to thousands of customers around the globe, day in and day out.

Unique features like variable speed technology and the MagShell™ design found only on FE PETRO® pumps deliver the industry's best-in-class flow rates.

A pump has to be reliable, it has to be safe, and it has to perform. That's why thousands of station owners around the world have trusted FE PETRO® pumps and the Franklin Electric motors that drive them to keep their business flowing for over 25 years.

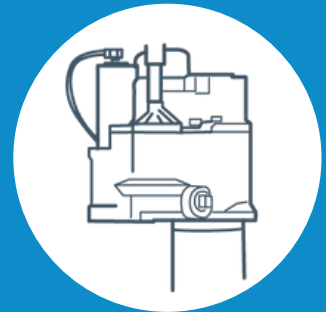
The rock-solid design of FE PETRO® pumps has remained virtually unchanged since day one, meaning we can, and still do, service our pumps installed since 1988 with maintenance safeguard features and full backward compatibility.



VARIABLE LENGTH



ADVANCED PROTECTION



FUEL COMPATIBILITY



INTAKE FILTER SCREEN



TURBINE PUMP INTERFACE

ELAFLEX



**GENERAL
PETROL**

HANGING EQUIPMENTS



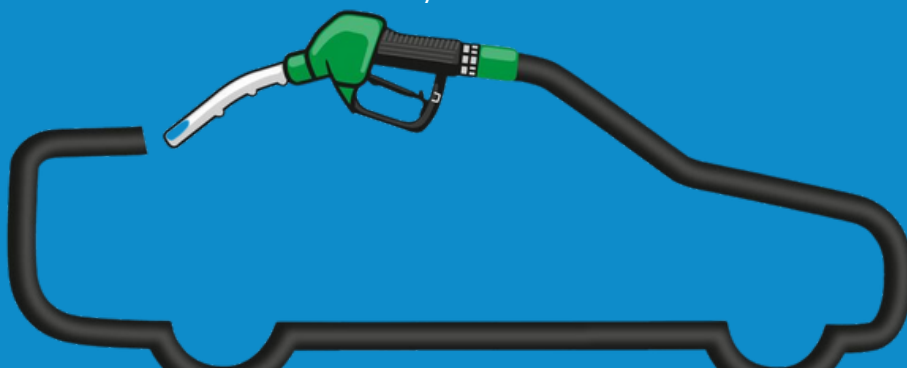
ELAFLEX HIBY is a leading international specialist for refuelling equipment and safe connections for the transfer of dangerous goods and sensitive fluids. Our hoses, fittings, couplings, expansion joints and nozzles have been setting standards, since 1923. We provide quality engineered, durable products. A sound investment both in terms of performance and total lifetime cost benefits. ZVA nozzles, petrol pump hoses and refuelling accessories are assigned to our profit centre for petrol station technology (EHT). Our range of automatic nozzles under the brand name of ZVA was developed at the beginning of the 60's together with our premium dispensing hoses. EHT has indeed established itself as one of the world market leaders in nozzles and dispensing hoses – especially in the vapour recovery sector (Stage II).

Automatic nozzle with vapour recovery, flow rate up to 45 l/min.

Working pressure 0,5 up to 3,5 bar. Temperature range - 20° C up to + 55° C.

Suitable for all standard gasoline fuels (also with ethanol content up to E 85). Not suitable for pure alcohol, water and solvents.

Venturi controlled automatic shut-off with safety cut-out valve. 2-speed lever latch with removable latch pin EB 280. Body of aluminium, spout with single piece VR suction inlet, of aluminium and stainless steel. Thread connection M 34 x 1,5 female for hose-sided COAX swivel. Diaphragm and seals of NBR, PU, FKM. Guard and lever of composite plastic. Inner parts of brass, stainless steel, POM and PEEK. Scuffguard and comfigrip of PVC. Product Sleeve EK 043 of Polyurethane





DISPENSING EQUIPMENTS

Since 1892, OPW has set the industry standard in fueling equipment. Today, we continue our leadership legacy by offering the broadest, most innovative product portfolio of fueling solutions in the world. A product portfolio specifically designed to meet the varying needs of our customers and their wide array of budget, compliance and application requirements.

OPW dispensing solutions offer the convenience of choice, backed by a tradition of quality, reliability and performance. For retailers large or small, OPW has the right hardware solution to meet your needs. OPW nozzles are found in more locations worldwide than any other brand. When you choose any of our wide selection of dispensing products, you can rest assure that your fueling experience will be the safest, most efficient, reliable and environmentally-sustainable it can be, every time.

UNDER GROUND STORAGE TANK EQUIPMENTS

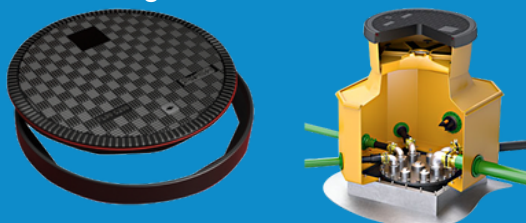
OPW offers a wide selection of underground storage tank equipment. This equipment is designed to help protect the environment by providing fuel operations with overfill prevention solutions, fill pipe connection adapters, tank venting equipment, shut-off and shear valves etc.



COVERS & CONTAINMENT

From high-performance GRP composite covers to watertight tank and dispenser sumps, OPW manufactures products that can deliver in the toughest conditions. OPW manufactures a comprehensive range of access covers, both square and round, stock and custom, with the most common sizes being 900mm or 1020mm diameter in 25 or 40 tonne load ratings.

- Fibrelite
- OPWlite



1528 CL



Camlock cap

Body: Aluminium
Gasket: NBR
Brass closing clamps

Art.No.	Size	Colour
1528-08	DN100 4"	black
1528-08 A	DN100 4"	orange

CE

1525 VR



Vapour recovery adaptor

Body: aluminium
Shaft material: stainless steel
Thread: BSP ISO 228-1
Gasket: Viton®

Art.No.	Size
1525VR-20	4"cam-lock M x 2"F
1525VR-10	4"cam-lock M x 3"F
1525VR-00	4"cam-lock M x 4"F

CE

1524 EN-P

1534 EN-P



Vapour recovery adaptor with in-line deflagration flame arrester

Body: aluminium
Thread: BSP ISO 228-1
Flame proof element: ribbon coil stainless steel
Ribbon coil plates: 2 units
Ribbon coil standard gap (MESG): 0,65 mm
Gasket: Viton®
Unidirectional

Art.No.	Size
1524-01 EN P	3"F x 4" cam-lock M

Art.No.	Size
1534-00 EN P	3"F x 3" cam-lock M

CE

197 EN-P VENT



End of line flame arrester vent

Body: anodized aluminium
No poppet or spring inside
Thread: NPT Female
Flame proof element: ribbon coil stainless steel
Ribbon coil standard gap (MESG): 0,65 mm

NEW

Art.No.	Size
197VA-50-00	2" F
197VA-100-00	4" F
197VA-150-00	6" F

CE

27/28



Emergency shut-off valve

Body: aluminium
Spring: stainless steel
Gasket: Viton®
Flow rate: 300 l/min
Thread: BSP ISO 228-1
*on request

Single poppet		
Mod.	Art.No.	Size
28*	28-40-01	1"1/2F x 1"1/2F

Double poppet		
Mod.	Art.No.	Size
27*	27-40-01	1"1/2F x 1"1/2F

CE UNI EN 13617-3

1010 EN-P



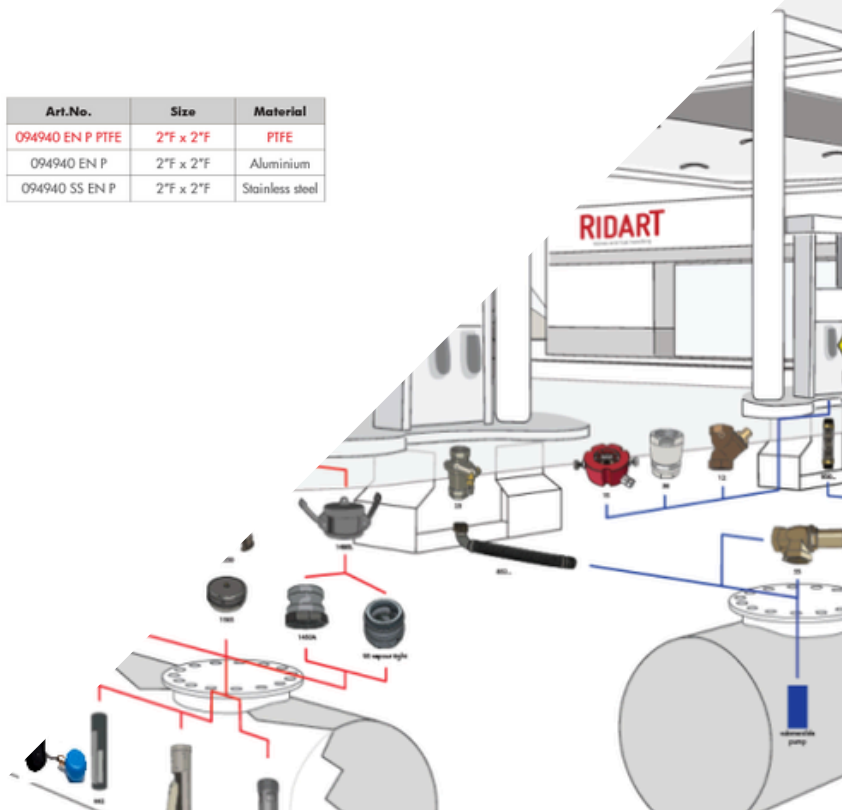
Ball float vent valve with in-line deflagration flame arrester

Body: aluminium (AL)
Floating ball: PPHD
Flame proof element: ribbon coil stainless steel
Ribbon coil standard gap (MESG): 0,65 mm
Unidirectional for liquid
Thread: BSP ISO 228-1

NEW

Art.No.	Size	Material
094940 EN P PTFE	2"F x 2"F	PTFE
094940 EN P	2"F x 2"F	Aluminium
094940 SS EN P	2"F x 2"F	Stainless steel

CE





CANOPY CONSTRUCTION

DESIGN FOR GAS STATIONS

GP solves business problems of our Customers. Having defined the boundaries of creative research, the creative team of designers, constructors begins to work. We make classic design, while following trends and innovative solutions in architecture and design. Our methodology in the design process is to study the cultures of the countries in which we operate. A wide palette of color catalogs and direct interaction with suppliers makes it possible to create a unique texture, color and night look, which is so important for a gas station. GP specialists create designs and constructions using high-quality materials with guaranteed relevance for the next 10 years and the possibility of reformatting easily in case the customer wants to update corporate identity.



SMART WASH SYSTEMS



In the realm of cleaning technology and vehicle washing, EHRLE has firmly established itself as a global leader, providing unparalleled solutions to customers worldwide. Since its inception, EHRLE has remained steadfast in its commitment to fully developed technology, innovative ideas, exceptional quality, and impeccable service.

What sets EHRLE products apart is their unwavering dedication to above-average quality and cutting-edge technology, combined with a sleek and modern design. Crafted from high-quality materials, our products boast an exceptionally long service life and offer remarkable economic efficiency.

At EHRLE, we continuously strive for progress through constant new product developments and the ongoing enhancement of our existing range. This steadfast commitment has paved the way for the attainment of remarkably high manufacturing standards, which have proven instrumental in the global success of EHRLE products. A fundamental prerequisite for this success was the introduction of modern assembly line production techniques, accompanied by meticulous and continuous material testing. Our products undergo rigorous scrutiny during final inspection, conducted with the aid of test computers, ensuring the utmost in quality control.

General Petroleum stands out as a premier distributor of EHRLE products, offering a comprehensive range that includes our latest innovations. With their extensive industry expertise and commitment to customer satisfaction, General Petroleum serves as a trusted partner, ensuring that EHRLE solutions reach a wide range of clients across various sectors.

Together, EHRLE and General Petroleum are poised to revolutionize the cleaning technology and vehicle washing industry. By combining our state-of-the-art products with General Petroleum's unwavering commitment to quality and service, we create a formidable alliance that guarantees the utmost satisfaction for our valued customers.



CHARGERS

Ecotap, a renowned provider of electric vehicle (EV) charging solutions in the Netherlands, embarked on a new chapter of growth on August 2, 2021, as it joined forces with Legrand SA. This strategic partnership marks a significant milestone in Ecotap's journey, as it gains a strong and supportive partner to fuel its international expansion endeavors.

Crucially, Legrand's robust commitment to environmental, social, and governance (ESG) principles, as well as its advocacy for social entrepreneurship and diversity, perfectly aligns with Ecotap's own values and culture.

Legrand, a global leader in electrical and digital building infrastructures, is revered for its comprehensive range of solutions catering to commercial, industrial, and residential markets worldwide.

With a forward-thinking approach, Legrand embraces technological advancements and societal trends that have a lasting impact on buildings. By transforming the spaces where people live, work, and connect, Legrand aims to enhance lives through simple, innovative, and sustainable electrical and digital infrastructures, alongside connected solutions.

This partnership between Ecotap and Legrand brings together two powerhouses in their respective fields, creating a formidable force at the intersection of electric mobility and cutting-edge building technologies. The integration of Ecotap's expertise in EV charging solutions with Legrand's extensive portfolio positions the alliance as a reference point for customers seeking the most reliable, efficient, and sustainable charging infrastructure.

General Petroleum, a premier distributor of innovative solutions, takes pride in being the preferred distributor for Legrand products. With a rich history and deep expertise in the industry, General Petroleum perfectly complements Legrand's commitment to excellence. Their shared values and dedication to providing top-quality service make General Petroleum the ideal partner to ensure that Legrand's advanced solutions reach a diverse range of customers through their extensive network.



DC 180 KW



DC 120 KW



DC 60 KW



DC 30 KW



AC 22 KW



AC 11 KW



INDOOR & OUTDOOR LIGHTING SYSTEMS



INDOOR & OUTDOOR LIGHTING



Upgrade your gas station's lighting to new heights with GP's LED canopy lights. Specifically designed for optimal performance, these lights provide a technical edge to enhance visibility, safety, and efficiency at General Petrol.

ATEX Certification: GP LED canopy lights boast ATEX certification, ensuring safe operation in potentially explosive atmospheres, meeting the highest safety standards.

Durable Construction: The Primo series features robust die-cast construction, designed to withstand challenging environments, ensuring longevity and reliability.

IP Rating and IK Rating: With an IP rating of 66 and IK rating of 10, GP LED canopy lights are built to endure harsh conditions, providing lasting performance.

Wattage Options: Choose from a range of wattages to suit different canopy heights. Precision in wattage selection ensures efficient and tailored illumination.

Lighting Distribution Options: Tailor lighting distribution with options for symmetric or asymmetric distribution, optimizing visibility in specific gas station areas.

Installation Flexibility: Versatile installation brackets (Surface mounting, Recessed mounting, Bracket mounting) adapt to various spaces, including under the canopy, entrance, and commercial areas.

Intelligent Control: Incorporate smart control systems such as motion sensors for dynamic lighting adjustments, enhancing energy efficiency without compromising safety.

The implementation of intelligent solutions, like motion sensors, showcases our commitment to efficient and forward-thinking gas station lighting.

Revitalize General Petrol with GP's LED canopy lights – a fusion of technical prowess, safety assurance, and energy efficiency. Elevate your gas station's lighting experience with our ATEX-certified, durable, and intelligently designed LED canopy lights. Illuminate with precision, reliability, and style – contact us to explore our advanced lighting solutions.

For inquiries or to explore our comprehensive catalog, contact GP today. Illuminate your space with cutting-edge LED technology tailored for General Petrol's specific needs.



KEY FEATURES OF RFID FUEL MANAGEMENT SYSTEM



Vehicle Tag

Maintenance-free tags that automate and simplify vehicle identification, available in multiple form factors and attachment options. Programmable with specific fuel type requirements and suitable for multiple vehicle styles

- Various form factors
- Reports vehicle ID and fuel type to Nozzle Unit
- Optional tamper protected models
- Easy and durable affixation
- 125kHz, programmable tags

Fueling stations for:

- Construction vehicles
- Trucks
- Bus coaches
- Any other commercial fleet vehicles



Vehicle Unit

Ultra-rugged tags can be connected to the vehicle electronics to seamlessly report valuable data on vehicle utilization, distance driven, engine cycles and other operational statistics.

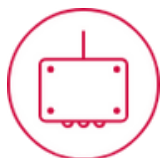
- Ultra-rugged and standard versions available
- Wireless reporting of vehicle data to fueling base station
- Reports distance driven per odometer pulser input
- Reports minutes of operation per vehicle ignition input
- Dual RFID readers for optional driver badge scanning
- Supports 12V and 24V automotive power supply



Nozzle Unit

A robust reader easily installed on the fuel dispenser to read and transmit vehicle tag data to the FMS for the authorization or prevention of fuel consumption for non-registered vehicles.

- Simple installation on various existing nozzles
- Fully encapsulated rugged, antistatic and anti-tamper design
- ATEX / IECEx compliant
- Multi-year battery life
- Completely wireless operation incl. remote firmware update
- Supports custom branding • Motion sensors to optimize battery life



Wireless Controller

A programmable base station to relay data picked up by nozzle or vehicle units to the FMS and activate/deactivate fuel dispersion based on FMS authorization.

- Simple installation
- Outdoor environment resistant housing
- Multitude of connectivity options
- Triggers fuel dispersion based on FMS decision
- Encrypted communication to Vehicle and Nozzle Units
- In-field firmware upgradeable

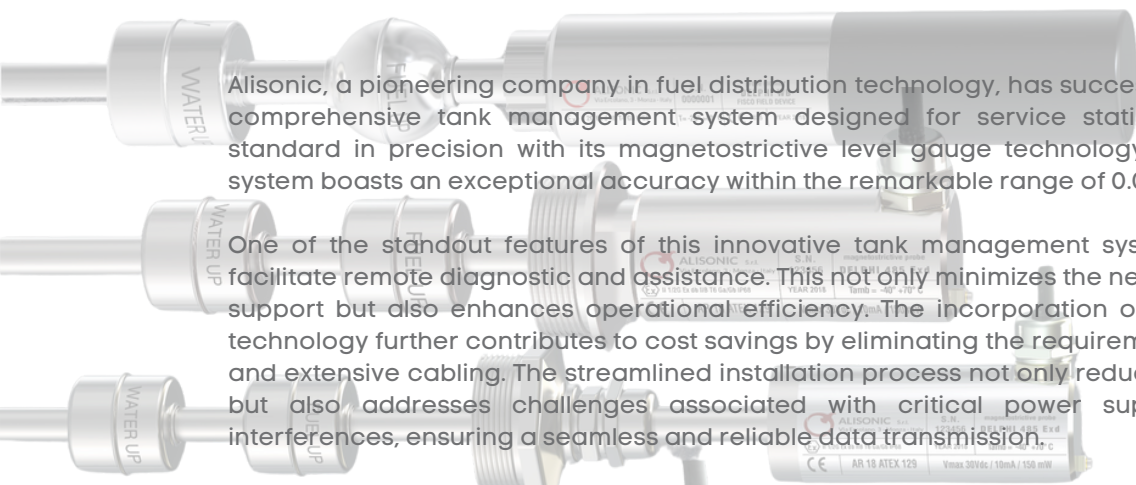




ALISONIC



LEVEL GAUGES AND FUEL MEASUREMENT SOLUTIONS



Alisonic, a pioneering company in fuel distribution technology, has successfully engineered a comprehensive tank management system designed for service stations, setting a new standard in precision with its magnetostrictive level gauge technology. This cutting-edge system boasts an exceptional accuracy within the remarkable range of 0.01 mm.

One of the standout features of this innovative tank management system is its ability to facilitate remote diagnostic and assistance. This not only minimizes the need for costly on-site support but also enhances operational efficiency. The incorporation of the latest wireless technology further contributes to cost savings by eliminating the requirements for excavation and extensive cabling. The streamlined installation process not only reduces time constraints but also addresses challenges associated with critical power supply and potential interferences, ensuring a seamless and reliable data transmission.

Alisonic has uniquely harnessed low-frequency technology, allowing for efficient data transmission even under challenging conditions such as metallic lid covers, concrete sumps, and heavy traffic on station forecourts. This technology not only guarantees accurate monitoring but also ensures resilience against potential obstacles.

In Turkey, General Petrol proudly serves as the exclusive distributor of Alisonic products. This partnership brings the cutting-edge tank management system to the Turkish market, providing service stations with a reliable, accurate, and technologically advanced solution for efficient fuel distribution. With Alisonic's commitment to excellence and General Petrol's dedication to delivering top-notch products, the collaboration stands as a testament to advancing the fuel distribution industry in Turkey and beyond.

Magnetostrictive Probes;

- Wired Magnetostrictive Level Gauge Delphi RS
- Wireless Magnetostrictive Level Gauge Delphi RDT
- Explosion Proof Wired Magnetostrictive Level Gauge
- Delphi ExD/SS
- Flexible Wireless and Wired Magnetostrictive Level Gauge

Consoles;

- Sibylla
- Helios TFT



Our Mission

Our mission at General Petroleum Equipment is to provide top-quality engineering services and equipment solutions to fuel station businesses, helping them achieve operational efficiency, reliability, and customer satisfaction.

Our Vision

At General Petroleum Equipment, we envision becoming the leading provider of fuel station equipment and engineering services globally, recognized for our innovative solutions, exceptional customer service, and commitment to sustainability and safety. We strive to continuously improve and exceed our customers' expectations, while fostering a culture of excellence and integrity among our employees and partners.

Why General Petrol ?

General Petroleum Equipment (GPE) provides engineering services and equipment for fuel station businesses for several reasons:

Fuel station businesses rely on efficient and reliable equipment to keep their operations running smoothly. GPE provides high-quality equipment, such as fuel pumps, infrastructure piping, and tank and fuel pump automation systems, to ensure that fuel station owners can count on their equipment to work correctly when they need it.

GPE offers a wide range of equipment, including car washing systems, fuel station canopies, and lighting systems, to help fuel station owners create a complete, functional, and attractive fuel station. Having a well-designed and attractive fuel station can help attract more customers and increase sales.

As an engineering service provider, GPE can also help fuel station owners with installation, maintenance, and repair of their equipment. This can be especially helpful for fuel station owners who may not have the expertise or resources to handle these tasks themselves.

GPE is committed to providing excellent customer service and support. They strive to build long-term relationships with their clients and ensure that they are satisfied with the equipment and services they provide. Overall, GPE is a valuable partner for fuel station businesses, offering the equipment, expertise, and support needed to operate efficiently and effectively.



Message from Co-Owners

We are honored to extend my greetings to you as the Co-Owners of our esteemed company and take this opportunity to articulate our strategic vision for the future.

At the core of our organizational ethos lies an unwavering commitment to delivering unparalleled products and services to our valued clients, all the while steadfastly embracing a dual focus on innovation and sustainability. We firmly believe that our success hinges on our agility in adapting to the dynamic needs of our clients and the wider community, coupled with a resolute dedication to fostering a sustainable future for all.

To translate our vision into reality, we consistently channel significant investments into research and development, actively explore cutting-edge technologies, and proactively seek innovative solutions to the multifaceted challenges confronting our industry. Collaborating closely with our partners and stakeholders, we are deeply engaged in advancing sustainability and promoting responsible business practices across all facets of our operations.

As we cast our gaze towards the horizon, our unwavering commitment remains centered on delivering exceptional value to our clients and effecting positive change within the communities where we operate. Upholding the highest standards of ethical conduct, safety, and environmental stewardship, we pledge to persistently pursue excellence across every aspect of our endeavors.

I wish to express profound gratitude to our dedicated employees, discerning customers, invaluable partners, and steadfast shareholders for their continuous support and unwavering commitment to our shared vision. It is through our collective efforts that we can forge a luminous future, not only for our organization but also for generations to come.

With sincerest regards,

İLKER ERİN | Managing Partners
HASAN DUMAN | Managing Partners

Our References





GET IN TOUCH

CONTACT US :



+90 531 400 30 75



www.general-petrol.com



hasan.duman@general-petrol.com



Fevzi akmak Mh, Őehit Tugay Karaman
Sok No:23/2, 34890 Pendik/İstanbul,
Türkiye



MEET US

HASAN DUMAN

At General Petrol Ekipmanları A.S. , our Sales Department stands out with its commitment to customer satisfaction and effective sales strategies. For detailed information about our products and sales processes, you can contact our Sales Manager, Hasan Duman.

Contact Information:

- Name: Hasan Duman
- Phone: +90 (531) 400 30 75
- Email: hasan.duman@general-petrol.com

ILKER ERIN

Our Technical Department excels in delivering projects with the highest quality standards through advanced technology and engineering solutions. For more information on our technical support and services, please reach out to our Technical Manager, İlker Erin.

Contact Information:

- Name: İlker Erin
- Phone: +90 (541) 733 08 18
- Email: ilker@general-petrol.com

NURGUN TEKCEKIC

Our Financial Department provides expert services in financial management and reporting with its specialized team. For information on financial processes and reporting, please contact our Financial Manager, Nurgün Tekçekiç.

Contact Information:

- Name: Nurgün Tekçekiç
- Phone: +90 (533) 399 81 41
- Email: muhasebe@general-petrol.com

