

# ENSTO

## Electric Vehicle Charging Solutions for modern charging



Better life.  
With electricity.

**Better life.**  
With electricity.

Ensto enables electric vehicle charging where ever people move. Our goal is to provide sustainable electric vehicle charging solutions with lifetime value for users, owners and operators.

[ensto.com](http://ensto.com)



## Content

Electric vehicle charging services that make life easier . . . . .	5
Charge your vehicle at work . . . . .	6
Shopping centres and public car parks . . . . .	7
Ensto EV Manager . . . . .	9
Ensto eFiller. . . . .	11
Ensto Wallbox. . . . .	15
Ensto Pro . . . . .	21
Ensto Media. . . . .	27
EV Manager . . . . .	31



# Electric vehicle charging services that make life easier

## At home and in shared car parks

As electric vehicles become more common, so does charging at home. Studies show that more than 90% of charging events take place at home overnight or when the vehicle is parked for longer periods.

Ensto offers reliable, efficient and modular charging solutions for electric vehicles (EVs). We are Finland's leading provider of EV charging facilities and services, and our high-quality products cover a wide range of needs. We focus on smart charging solutions, and our charging points are compatible with smart networks and cloud services. Our environmentally friendly EV charging solutions are designed to make life that little bit easier and to improve our quality of life in line with Ensto's brand promise.

### Electric vehicle charging at home

By far the most common location for charging electric and hybrid vehicles is at home. This is not surprising since overnight charging usually takes place on a driveway or in a car shelter or garage at home. Home charging has to be easy and safe, and Ensto's solutions meet both of these requirements.

Our products are designed for home use, and they offer all the features needed for the hassle-free and reliable charging of electric and hybrid vehicles.

Ensto eFiller is a compact wall-mounted charging point with a fixed cable. When you charge your vehicle at home, you are usually not in a hurry, but you need a charging system that is safe and reliable. Your vehicle is fully charged in the morning, and an extra stop at a charging station is not needed.

### Electric vehicle charging in shared car parks

There are various solutions for EV charging in shared car parks of apartment blocks. The system used for managing access to the charging points is an important factor when choosing the right solution.

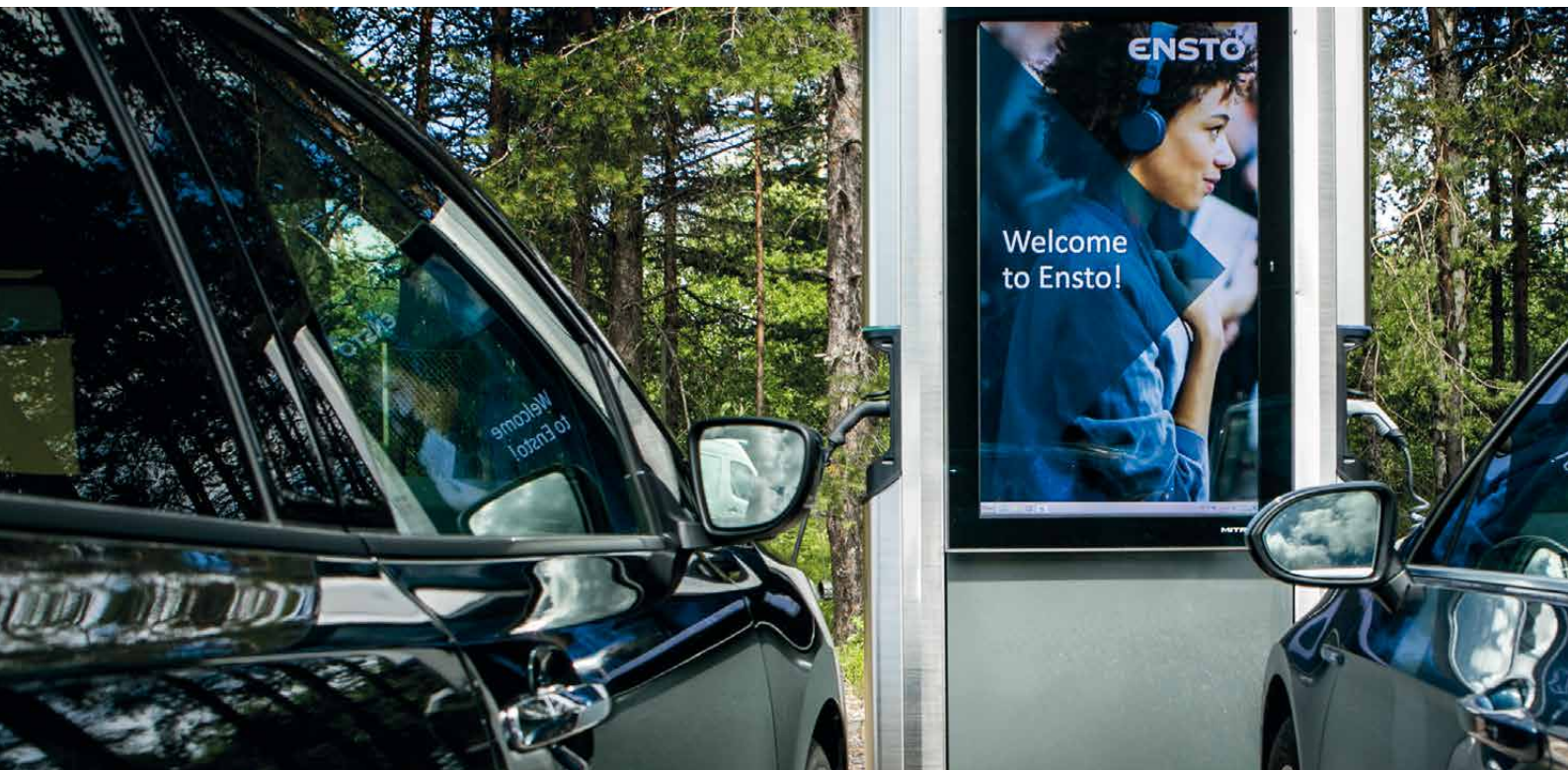
Efficient management of the charging points and user data is important in order to make sure that the charging points are only used by eligible residents. The charging infrastructure has to support and encourage the use of electric vehicles, and it has to make it as easy and flexible as possible.

- ▶ **eFiller** is a safe solution for EV charging at home. It is robust, easy to use and quick to install.
- ▶ **Wallbox** is a modular solution for EV charging, and it has been designed especially for use in shared car parks.



# Charge your vehicle at work

## Charging points and services



Ensto has been designing and producing EV charging points for over 10 years, and we can offer solutions tailored to the needs of your business. Ensto's charging points are durable, robust and future-proof.

### Charging points and services for businesses

The market for EV charging solutions continues to grow. Providing access to EV charging can give businesses an important competitive advantage. EV charging points can help businesses achieve sustainability goals, promote green values and improve their brand image.

Customisable charging points provide an opportunity to highlight the company's eco-friendly values or brand. Ensto's solutions allow for creation of separate profiles for specific user groups: businesses can, for example, offer free charging to visitors and paid charging to employees.

### Reliable solutions

An EV charging point is much more than just a socket: it is a way to go the extra mile and show that your business cares about its customers and employees. Ensto is a reliable partner, and we can offer a solution that is a perfect match for the needs of your business.

- Efficient charging and low maintenance costs
- Mode 3 sockets that are compatible with all commonly used electric vehicles
- Easy to install and deploy
- Customisation through colours, decals and branding
- Advanced, cloud-based remote management with EV Manager
- User profiles and user-specific consumption reporting
- Reporting tools for user-specific reporting for billing purposes
- Optional integration with other systems, such as payroll and access control

# Shopping centres and public car parks

## Electric vehicle charging points



Remote connection and smart, cloud-based management software save time and money.

### EV charging points for shopping centres and public car parks

Are your parking facilities up to date? As the number of electric vehicles grows, so does the demand for charging facilities in public car parks. Offering charging facilities provides added value to car park operators as EV drivers spend longer in car parks that have charging services available.

Ensto has been designing and producing EV charging points for over 10 years, and we can offer solutions tailored specifically for your car park. Ensto's modern charging points are durable, robust and future-proof.

### Modern and robust EV charging stations

Ensto's comprehensive product range has the perfect solution for any location and environment. We make EV charging easy and safe. Our products provide an environmentally friendly way to give customers a helping hand and make life a little bit easier.

As the manufacturer, we can offer a wide range of installation and customisation options and tailor our products to the needs of your customers. We can also provide additional services, including maintenance packages and extended warranties. Please contact our sales team for further information.

### Electric vehicle charging in public places

- › Expertise – we will find the optimal products for your needs.
- › Reliability – all EV charging points are produced in our own factories.
- › Optional integration with other systems.
- › Our charging points allow for dynamic load management to optimise the use of the charging infrastructure.
- › Remote connection and smart, cloud-based management software save time and money.





ANNAHME

DIREKTANNAHME

# Ensto EV Manager

A service for managing electric vehicle charging points and users

When a charging station has multiple users, managing access to the charging points and keeping track of the energy consumed by each user is crucial. EV Manager makes these tasks easy.

## Developed for owners of charging points

Ensto EV Manager is a service for management of EV charging points and users. Its intuitive user interface allows for the quick and efficient management and operation of the charging points, as well as user-specific monitoring and reporting of consumption data.

The EV Rest application interface of Ensto's cloud service comes with capabilities that allow for future improvements and development of new features. Our

integrations offer practically unlimited opportunities for customisation. EV Manager also offers the Ensto API that allows for the creation of customer-specific applications. EV Manager is suitable for charging point owners of all sizes – from large companies to individual apartment blocks.

## The benefits of EV Manager

The visual status dashboard shows charging point usage and any error messages at a glance. The EV Manager application provides data on availability,

disruptions and energy consumption. User-specific consumption data and charging point usage reports simplify billing and payments.

## Why choose EV Manager?

- › Real-time monitoring and management
- › Comprehensive management of all connected charging points and users
- › Clear and intuitive user interface
- › Compatible with OCPP 1.6J charging points
- › Flexible – suitable for businesses, apartment blocks, public car parks and more



EV Manager is compatible with Ensto's EV charging points.

EV Manager offers an intuitive user interface that allows for quick and efficient management of the charging points and users. It also supports user-specific consumption reporting.





# Ensto eFiller

Modern and easy home charger.

With Ensto eFiller, charging your electric vehicle could not be easier. It is specifically designed for home use and includes all the basic, easy-to-use features you need for a reliable EV charge at home.



"It's tough.  
It's easy.  
It's yours."



# Sleep tight and let eFiller do the job

Designed for convenient home charging with easy-to-use features.



“Safe EV charging at home.”

When charging your EV at home, you're not usually in a hurry, but you need a safe and solid charger. Ensto eFiller is tough, but good looking unit. eFiller does it's job so you can relax...

#### It's tough

The full metal structure of Ensto eFiller guarantees durability for both the weather (IP44) and external impacts (IK10).

#### It's easy to use

Ensto eFiller is a simple home charging solution. It has a fixed charging cable, which is effortless to handle and store. A separate charging plug holder can be installed to the most convenient spot on your wall.

#### It's easy to install

Ensto eFiller doesn't need any commissioning. Maximum charging current can be limited to fit electric supply of your home.

#### It's yours

Your parking place at home will probably be your most frequently used charging point. Choose Ensto eFiller for the most efficient EV charging at your home.





EVH020-02H

### Structure

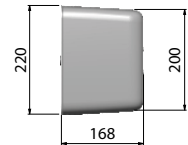
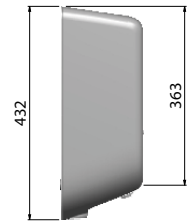
- › Body cast aluminium
- › Front panel stainless steel
- › Fixed charging cable 4,5 m
- › IP44
- › IK10
- › Ambient temperature range -30...+50 °C

### Installation

- › Fixing to wall
- › Wall holder for charging cable



EVH020-02H



Charging cable length 4,5 m

E number	Product code	Technical name	Charging current (A)
34 403 40	EVH020.02H	EVH020.02H 1x16A IP44 Type2	1x16
34 403 49	EVH050.02H	EVH050.02H 3x16A IP44 Type2	3x16



# Ensto enables smart EV charging for everyone!



**Ensto eFiller**

Compact wall mounted charging point with fixed charging cable.



**Ensto Wallbox**

Modular solution for single or dual EV charging. Compact and user-friendly design.



**Ensto Pro**

An easy-to-use, long lifetime AC charging station for public and semi-public EV charging.



**Ensto Premium**

Timelessly stylish and advanced solution for fast charging of electric vehicles.



**Ensto Media**

Uniquely combines EV charging and outdoor advertisement with its stunning digital display.



**Ensto Power**

Extremely fast on route charger when you are in a hurry.

- 1-PHASE
- 3-PHASE
- KW / OUTLET
- SMART
- ETHERNET
- SIM
- FIXED CABLE
- CABLE RELEASE
- NEEDED RCD
- CHARGING OUTLETS
- USER CONTROL
- LOAD MANAGEMENT
- MID-METER

	Ensto eFiller	Ensto Wallbox	Ensto Pro	Ensto Premium	Ensto Media	Ensto Power
1-PHASE	x	x	x	x	x	-
3-PHASE	x	x	x	x	x	x
KW / OUTLET	3,6 / 11	22+22 (dual outlet models)	22+22 (dual outlet models)	22	22	50
SMART	-	x	x	x	x	x
ETHERNET	-	x	x	x	x	x
SIM	-	x	x	x	x	x
FIXED CABLE	x	-	-	-	-	x
CABLE RELEASE	-	x	x	x	x	x
NEEDED RCD	B	A	built-in	built-in	built-in	built-in
CHARGING OUTLETS	1	1-2	1-2	1-2	2	4
USER CONTROL	-	x*	x*	x*	x*	x*
LOAD MANAGEMENT	-	x**	x**	x**	x**	x**
MID-METER	-	x***	x	x	x	-

\* EV manager with separate subscription  
 \*\* For ethernet versions  
 \*\*\* With external control box

# Ensto Wallbox

EV charging with maximum power.

The compact and powerful Ensto Wallbox is a future-proof solution designed to deliver reliable EV charging for any business, in any environment.



"Stylish Scandinavian design with ambient lighting."



# Even if the winter is coming

## Ensto enables EV charging wherever people move



“Ideal for any weather and environment.”

Ensto Wallbox provides maximum charging. One unit provides 22kW power from BOTH outlets! And on top of that, it looks so good!

### It's smart

OCPP 1.6 and dynamic load management are basic features of Ensto Wallbox. With these Ensto Wallbox qualifies as smartest EV charger on market.

### It's tough

The structure of Ensto Wallbox guarantees durability for both the weather (IP54) and external impacts (IK10).

### It's flexible

Agile factory commissioning to back-end systems and wide range of customer tailorings will make Ensto Wallbox the most suitable selection to customers.

### It's visible

Ensto Wallbox is equipped with back-lighted body. Nice ambient light makes Wallbox easy to locate and comfortable to operate.





1 Socket charger



2 Socket charger

### Structure

- › Frame stainless steel
- › Body PETG-plastic
- › IP54
- › IK10
- › Ambient temperature range -30...+50 °C
- › Ambient light

### Installation

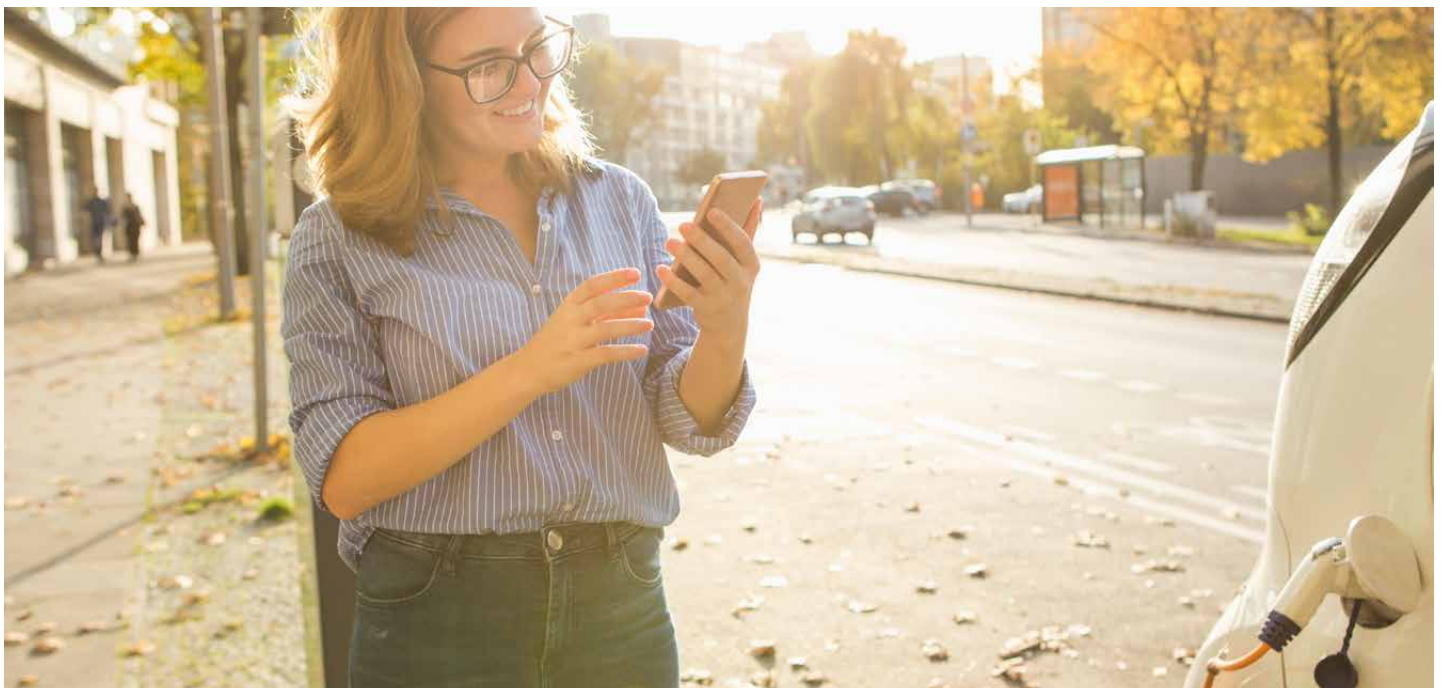
- › Fixing to wall with including bracket
- › Connection 5x2,5-50 mm<sup>2</sup> (copper), 6-50 mm<sup>2</sup> (aluminium)

### Features

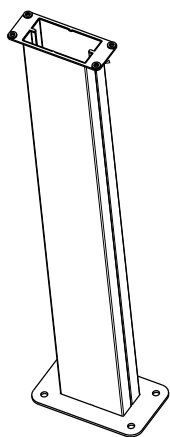
- › Built-in Residual Current Monitoring module for DC residual current leakage detection (RC-MB 6 mA)
- › Dynamic load management
- › RFID user authentication
- › OCPP 1.6
- › Adjustable maximum current setting, max 32A

### Made to order

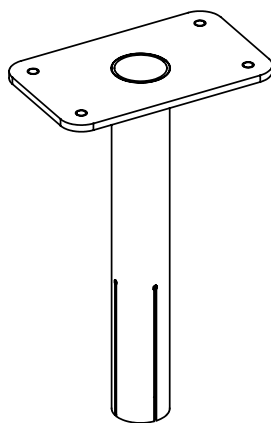
- › Factory pre-commissioning to back-end system
- › Customizable design for your brand
- › MID metering with separate enclosure



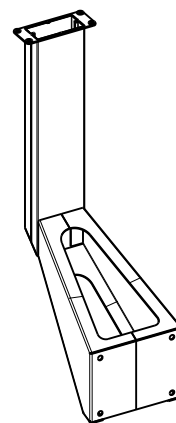
E number	Product code	Technical name	Data connection	Power cut lock release	IEC15118 communication
<b>1 Socket chargers</b>					
	EVB100-AS	EVB100-AS 22kW IP54 Type2 Ethernet	Ethernet		
	EVB100-ASA	EVB100-ASA 22kW IP54 Type2 Mobile	Mobile		
	EVB100-ASB	EVB100-ASB 22kW IP54 Type2 Ethernet 15118	Ethernet		X
	EVB100-ASAB	EVB100-ASAB 22kW IP54 Type2 Mobile 15118	Mobile		X
	EVB100-BS	EVB100-BS 22kW IP54 Type2 LR Ethernet	Ethernet	X	
	EVB100-BSA	EVB100-BSA 22kW IP54 Type2 Mobile LR	Mobile	X	
	EVB100-BSB	EVB100-BSB 22kW IP54 Type2 Ethernet LR 15118	Ethernet	X	X
	EVB100-BSAB	EVB100-BSAB 22kW IP54 Type2 Mobile LR 15118	Mobile	X	X
<b>2 Socket chargers</b>					
	EVB200-AS	EVB200-AS 2x22kW IP54 Type2 Ethernet	Ethernet		
	EVB200-ASA	EVB200-ASA 2x22kW IP54 Type2 Mobile	Mobile		
	EVB200-ASB	EVB200-ASB 2x22kW IP54 Type2 Ethernet 15118	Ethernet		X
	EVB200-ASAB	EVB200-ASAB 2x22kW IP54 Type2 Mobile 15118	Mobile		X
34 418 00	EVB200-BS	EVB200-BS 2x22kW IP54 Type2 LR Ethernet	Ethernet	X	
34 418 01	EVB200-BSA	EVB200-BSA 2x22kW IP54 Type2 Mobile LR	Mobile	X	
	EVB200-BSB	EVB200-BSB 2x22kW IP54 Type2 Ethernet LR 15118	Ethernet	X	X
	EVB200-BSAB	EVB200-BSAB 2x22kW IP54 Type2 Mobile LR 15118	Mobile	X	X
<b>2 Socket chargers with EV Manager subscription</b>					
34 418 02	EVB200C	EVB200C 2x22kW IP54 Type2 Ethernet EV Manager	Ethernet	X	
34 418 03	EVB200C-A	EVB200C-A 2x22kW IP54 Type2 3G EV Manager	Mobile	X	
<b>Accessories</b>					
	EVTL43.00	EVB pole			
	EVTL44.00	EVB base adapter for pole EVB43.00			
	EVTL48.00	EVB wallbracket extending			



EVTL43.00



EVTL44.00



EVTL48.00



Smart, easy and fast charging wherever people move. Ensto Wallbox offers wide range of possibilities in one beautiful package!



Ensto enables smart EV charging for everyone!



Ensto eFiller

Compact wall mounted charging point with fixed charging cable.



Ensto Wallbox

Modular solution for single or dual EV charging. Compact and user-friendly design.



Ensto Pro

An easy-to-use, long lifetime AC charging station for public and semi-public EV charging.



Ensto Premium

Timelessly stylish and advanced solution for fast charging of electric vehicles.



Ensto Media

Uniquely combines EV charging and outdoor advertisement with its stunning digital display.



Ensto Power

Extremely fast on route charger when you are in a hurry.

- 1-PHASE
- 3-PHASE
- KW / OUTLET
- SMART
- ETHERNET
- SIM
- FIXED CABLE
- CABLE RELEASE
- NEEDED RCD
- CHARGING OUTLETS
- USER CONTROL
- LOAD MANAGEMENT
- MID-METER

	X	X	X	X	X	-
	X	X	X	X	X	X
	3,6 / 11	22+22 (dual outlet models)	22+22 (dual outlet models)	22	22	50
	-	X	X	X	X	X
	-	X	X	X	X	X
	-	X	X	X	X	X
	X	-	-	-	-	X
	-	X	X	X	X	X
	B	A	built-in	built-in	built-in	built-in
	1	1-2	1-2	1-2	2	4
	-	X*	X*	X*	X*	X*
	-	X**	X**	X**	X**	X**
	-	X***	X	X	X	-

\* EV manager with separate subscription  
 \*\* For ethernet versions  
 \*\*\* With external control box

# Ensto Pro

EV charging with maximum durability.

The intelligent and durable Ensto Pro is a future-proof solution designed to deliver reliable EV charging for any business, in any environment.



“Enjoy a user-friendly experience.”



# Your business, your pleasure

Ensto Pro will serve your business needs everywhere



“Perfect for retailers, fleets, car parks, and more.”

Ensto Pro is THE charger. It includes charging and service ability for public and semi-public environment with connectivity to serve users, owners and operators!

#### It's smart

OCPP 1.6 and dynamic load management are basic features of Ensto Pro. With these Ensto Pro qualifies as smartest EV charger on market.

#### It's tough

The full metal structure of Ensto Pro guarantees durability for both the weather (IP54) and external impacts (IK10).

#### It's flexible

Agile factory commissioning to back-end systems and wide range of customer tailorings will make Ensto Pro the most suitable selection to customers.

#### It's safe

Ensto Pro built-in residual circuit breaker (RCD-A + DC 6mA RCMB). This guarantees user safety and installation according standards. This also allows installation without extra components in switchboard.





Black

### Structure

- › Body stainless steel, RAL 9016
- › IP54
- › IK10
- › Ambient temperature range -30...+50 °C

### Installation

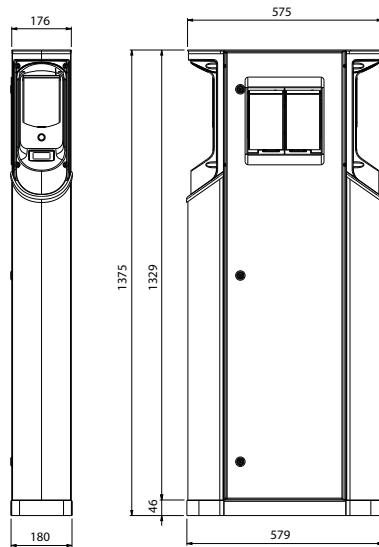
- › Fixing to ground or wall with optional brackets
- › Connection 5x2,5-50 mm<sup>2</sup> (copper), 6-50 mm<sup>2</sup> (aluminum)

### Features

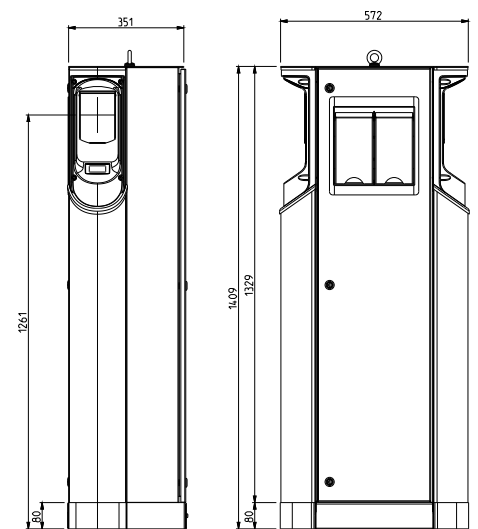
- › Built-in Residual Current breaker (RCD-A + DC 6mA RCMB)
- › Dynamic load management
- › RFID user authentication
- › OCPP 1.6
- › Adjustable maximum current setting, max 32A

### Made to order

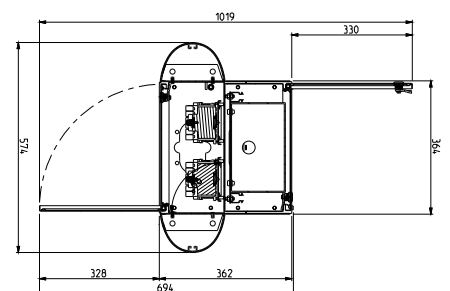
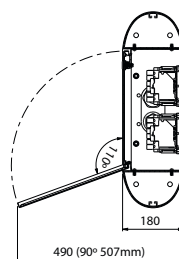
- › Alternative domestic socket
- › Surge protection
- › Distribution cabinet extension
- › Customer branding with paint and/or stickers
- › Factory pre-commissioning to back-end system
- › Arctic Kit - for extreme cold conditions, -30 degrees or below



EVF100, EVF200



EVF300



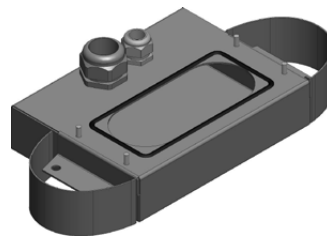
E number	Product code	Technical name	Data connection	Auto & Remote RCD	MID-metering	Mode 3 lock release	IEC15118 communication
<b>1 Socket chargers</b>							
	EVF100W-AS	EVF100W-AS 22kW IP54 Type2 Ethernet	Ethernet				
	EVF100W-ASA	EVF100W-ASA 22kW IP54 Type2 Mobile	Mobile				
	EVF100W-ASB	EVF100W-ASB 22kW IP54 Type2 Ethernet 15118	Ethernet				X
	EVF100W-ASAB	EVF100W-ASAB 22kW IP54 Type2 Mobile 15118	Mobile				X
	EVF100W-BS	EVF100W-BS 22kW IP54 Type2 Ethernet	Ethernet	X		X	
	EVF100W-BSA	EVF100W-BSA 22kW IP54 Type2 Mobile	Mobile	X		X	
	EVF100W-BSB	EVF100W-BSB 22kW IP54 Type2 Ethernet 15118	Ethernet	X		X	X
	EVF100W-BSAB	EVF100W-BSAB 22kW IP54 Type2 Mobile 15118	Mobile	X		X	X
	EVF100W-ASC	EVF100W-AS 22kW IP54 Type2 Ethernet MID	Ethernet		X		
	EVF100W-BSC	EVF100W-BS 22kW IP54 Type2 Ethernet MID	Ethernet	X	X	X	
	EVF100W-BSAC	EVF100W-BSA 22kW IP54 Type2 Mobile MID	Mobile	X	X	X	
	EVF100W-BSBC	EVF100W-BSB 22kW IP54 Type2 Ethernet MID 15118	Ethernet	X	X	X	X
	EVF100W-BSABC	EVF100W-BSAB 22kW IP54 Type2 Mobile MID 15118	Mobile	X	X	X	X
<b>2 Socket chargers</b>							
	EVF200W-AS	EVF200W-AS 2x22kW IP54 Type2 Ethernet	Ethernet				
	EVF200W-ASA	EVF200W-ASA 2x22kW IP54 Type2 Mobile	Mobile				
	EVF200W-ASB	EVF200W-ASB 2x22kW IP54 Type2 Ethernet 15118	Ethernet				X
	EVF200W-ASAB	EVF200W-ASAB 2x22kW IP54 Type2 Mobile 15118	Mobile				X
34 418 08	EVF200W-BS	EVF200W-BS 2x22kW IP54 Type2 Ethernet	Ethernet	X		X	
34 418 09	EVF200W-BSA	EVF200W-BSA 2x22kW IP54 Type2 Mobile	Mobile	X		X	
	EVF200W-BSB	EVF200W-BSB 2x22kW IP54 Type2 Ethernet 15118	Ethernet	X		X	X
	EVF200W-BSAB	EVF200W-BSAB 2x22kW IP54 Type2 Mobile 15118	Mobile	X		X	X
	EVF200W-ASC	EVF200W-AS 2x22kW IP54 Type2 Ethernet MID	Ethernet		X		
34 418 10	EVF200W-BSC	EVF200W-BS 2x22kW IP54 Type2 Ethernet MID	Ethernet	X	X	X	
	EVF200W-BSAC	EVF200W-BSA 2x22kW IP54 Type2 Mobile MID	Mobile	X	X	X	
	EVF200W-BSBC	EVF200W-BSB 2x22kW IP54 Type2 Ethernet MID 15118	Ethernet	X	X	X	X
	EVF200W-BSABC	EVF200W-BSAB 2x22kW IP54 Type2 Mobile MID 15118	Mobile	X	X	X	X
<b>2 Socket chargers with EV Manager subription</b>							
34 418 04	EVF200C	EVF200C 2x22kW IP54 Type2 Ethernet EV Manager	Ethernet	X		X	
34 418 05	EVF200C-A	EVF200C-A 2x22kW IP54 Type2 3G EV Manager	Mobile	X		X	
34 418 07	EVF200C-C	EVF200C-C 2x22kW IP54 Type2 MID Ethernet	Ethernet	X	X	X	
34 418 06	EVF200C-AC	EVF200C-AC 2x22kW IP54 Type2 MID 3G EV Manager	Mobile	X	X	X	
<b>Accessories</b>							
34 403 51	EVTL28.00	EVF ground mounting box					
34 403 52	EVTL31.00	EVF wall mounting bracket					
34 403 53	EVTL32.00	EVF ground mounting box					
34 403 54	EVTL34.00	EVF ground mounting box, cabling from top					
	EVTL36.00	EVF base adapter for EVB32.00					



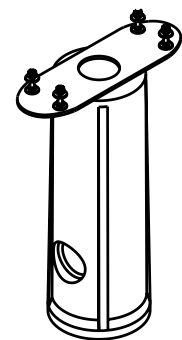
EVTL28.00



EVTL32.00



EVTL34.00



EVTL36.00



Reaching out to your EV driving customers or raising your brand awareness, Ensto Pro is your choice! Wide range of physical and virtual variations, will serve your business in best way possible.

Ensto enables smart EV charging for everyone!



Ensto eFiller

Compact wall mounted charging point with fixed charging cable.



Ensto Wallbox

Modular solution for single or dual EV charging. Compact and user-friendly design.



Ensto Pro

An easy-to-use, long lifetime AC charging station for public and semi-public EV charging.



Ensto Premium

Timelessly stylish and advanced solution for fast charging of electric vehicles.



Ensto Media

Uniquely combines EV charging and outdoor advertisement with its stunning digital display.



Ensto Power

Extremely fast on route charger when you are in a hurry.

- 1-PHASE
- 3-PHASE
- KW / OUTLET
- SMART
- ETHERNET
- SIM
- FIXED CABLE
- CABLE RELEASE
- NEEDED RCD
- CHARGING OUTLETS
- USER CONTROL
- LOAD MANAGEMENT
- MID-METER

	Ensto eFiller	Ensto Wallbox	Ensto Pro	Ensto Premium	Ensto Media	Ensto Power
1-PHASE	x	x	x	x	x	-
3-PHASE	x	x	x	x	x	x
KW / OUTLET	3,6 / 11	22+22 (dual outlet models)	22+22 (dual outlet models)	22	22	50
SMART	-	x	x	x	x	x
ETHERNET	-	x	x	x	x	x
SIM	-	x	x	x	x	x
FIXED CABLE	x	-	-	-	-	x
CABLE RELEASE	-	x	x	x	x	x
NEEDED RCD	B	A	built-in	built-in	built-in	built-in
CHARGING OUTLETS	1	1-2	1-2	1-2	2	4
USER CONTROL	-	x*	x*	x*	x*	x*
LOAD MANAGEMENT	-	x**	x**	x**	x**	x**
MID-METER	-	x***	x	x	x	-

\* EV manager with separate subscription  
 \*\* For ethernet versions  
 \*\*\* With external control box

# Ensto Media

Smart EV Charging with new possibilities

Ensto Media creates new possibilities for outdoor advertising and information sharing. Smart charging unit combined with big display will be highly visible in streets and parking lots.



“Functional and good looking combination.”



# Reliable and advanced charging technic!

Smart EV Charging is combined with outdoor advertising and brings information to the streets.



“Smart and fast charging!”

Ensto Media is versatile and smart EV Charging unit, which brings new possibilities for sales, marketing and information sharing towards modern target group. Display makes Media an unique unit.

#### It's smart

OCCP 1.6 and dynamic load management are basic features of Ensto Media. With these Ensto Media qualifies as smartest EV charger on market.

#### It's tough

The structure of Ensto Media guarantees durability for both the weather (IP54) and external impacts (IK10).

#### It's safe

Ensto Media built-in residual circuit breaker (RCD-A + DC 6mA RCMB). This guarantees user safety and installation according standards. This also allows installation without extra components in switchboard.

#### It sells

Large media display is great for outdoor advertising and makes a platform for different information sharing and searching. Try to combine commute traffic schedules and EV Charging to make healthier choices in cities and other urban areas.





### Structure

- › Body steel/aluminium, RAL 9006
- › IP54
- › IK10
- › Ambient temperature range -30...+50 °C

### Installation

- › Installation to ground

### Features for Charging

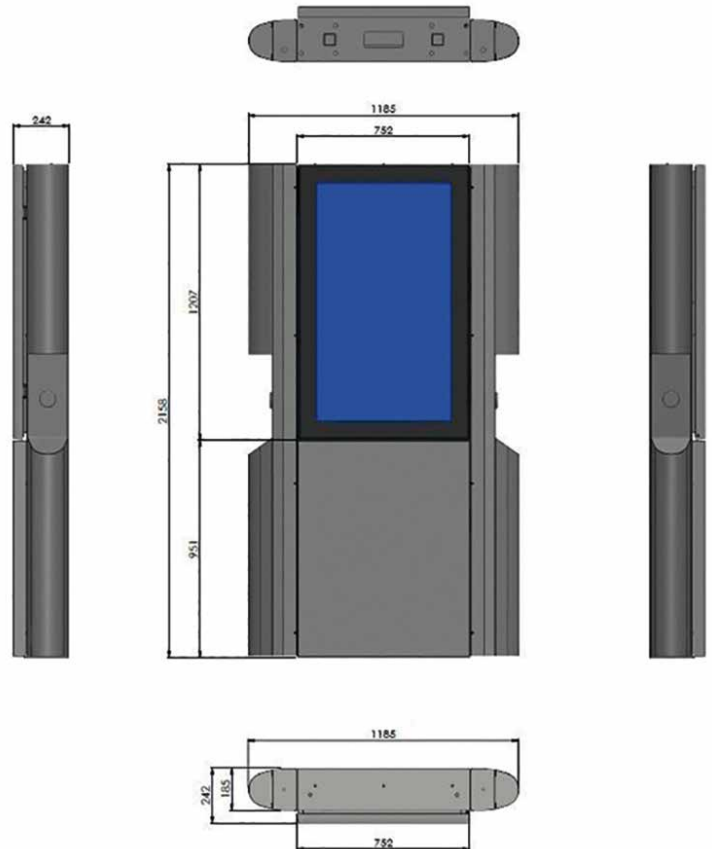
- › Built-in Residual Current breaker (RCD-A + DC 6mA RCMB)
- › Dynamic load management
- › RFID user authentication
- › OCPP 1.6
- › ISO15118 communication
- › Adjustable maximum current setting, max 32A

### Features for Media Display

- › 46" TFT LCD Display 2500 cd/m² with automatic dimming
- › Industrial PC (Windows7 / Linux OS)
- › WLAN or 4G remote control

### Made to order

- › 55" display
- › 2-sided display



E number	Product code	Technical name	Media display control options				
46" Display Chargers			Industrial PC	Linux OS	Windows 7	WLAN Modem	4G Modem
	EVMED-46-A	EVMED-46-A 2x22kW IP54 Type2 Ethernet 4G					
	EVMED-46-B	EVMED-46-B 2x22kW IP54 Type2 Ethernet 4G	x	x		x	
	EVMED-46-C	EVMED-46-C 2x22kW IP54 Type2 Ethernet 4G	x	x			x
	EVMED-46-D	EVMED-46-D 2x22kW IP54 Type2 Ethernet 4G	x		x	x	
	EVMED-46-E	EVMED-46-E 2x22kW IP54 Type2 Ethernet 4G	x		x		x



# Ensto enables smart EV charging for everyone!



**Ensto eFiller**

Compact wall mounted charging point with fixed charging cable.



**Ensto Wallbox**

Modular solution for single or dual EV charging. Compact and user-friendly design.



**Ensto Pro**

An easy-to-use, long lifetime AC charging station for public and semi-public EV charging.



**Ensto Premium**

Timelessly stylish and advanced solution for fast charging of electric vehicles.



**Ensto Media**

Uniquely combines EV charging and outdoor advertisement with its stunning digital display.



**Ensto Power**

Extremely fast on route charger when you are in a hurry.

- 1-PHASE
- 3-PHASE
- KW / OUTLET
- SMART
- ETHERNET
- SIM
- FIXED CABLE
- CABLE RELEASE
- NEEDED RCD
- CHARGING OUTLETS
- USER CONTROL
- LOAD MANAGEMENT
- MID-METER

	Ensto eFiller	Ensto Wallbox	Ensto Pro	Ensto Premium	Ensto Media	Ensto Power
1-PHASE	x	x	x	x	x	-
3-PHASE	x	x	x	x	x	x
KW / OUTLET	3,6 / 11	22+22 (dual outlet models)	22+22 (dual outlet models)	22	22	50
SMART	-	x	x	x	x	x
ETHERNET	-	x	x	x	x	x
SIM	-	x	x	x	x	x
FIXED CABLE	x	-	-	-	-	x
CABLE RELEASE	-	x	x	x	x	x
NEEDED RCD	B	A	built-in	built-in	built-in	built-in
CHARGING OUTLETS	1	1-2	1-2	1-2	2	4
USER CONTROL	-	x*	x*	x*	x*	x*
LOAD MANAGEMENT	-	x**	x**	x**	x**	x**
MID-METER	-	x***	x	x	x	-

\* EV manager with separate subscription  
 \*\* For ethernet versions  
 \*\*\* With external control box

# EV Manager

Connecting SMART way



Ensto EV Manager is intuitive user-interface that enables quick and efficient management, operation and control of electric vehicle users and charging stations as well as user-based consumption data reporting.

### Visualize

Assess visually Charging status including alerts of possible faults.

### Manage

Add new and manage existing Charging Stations and Charging Station users efficiently.

### Report

Create user based consumption reports.

### Remote

Solve basic faults like tripped RCD or stuck charging cable remotely.



“Perfect match with Ensto EV charging stations.”



# EV Manager

For the big picture



## VISUALIZE CHARGING STATION STATUS

Get visual information about chargers being available, unavailable, charging, suspended and fault state as well as groupings and consumption graphs.



## MANAGE USERS AND CHARGING STATIONS

With EV Manager it is possible to add, edit and authorize users as well as charging stations easily.



## REPORT CONSUMPTION

Report user-specific consumption data or charging point usage between desired dates.



## REMOTE CONTROL

Control charging stations remotely and perform functions like start/stop charging, release cable, reset and get diagnostics.



# EV Manager – Operation Plans

		Single	Essential	Dynamic
<b>No. of charging stations</b>		1	Up to 20	Up to 50
<b>EV Manager environment</b>		Shared	Shared	Customer specific
<b>SLA level</b>		Best effort	Best effort	Prioritized
<b>EV Manager features</b>	Charging station status	Supported	Supported	Supported
	Remote control	Supported	Supported	Supported
	User management	Supported	Supported	Supported
	Consumption data	Supported	Supported	Supported
<b>Ethernet connectivity</b>		Supported	Supported	Supported
<b>Ensto mobile connectivity</b>		Supported	Supported	Supported
<b>Customer mobile connectivity</b>		Not supported	Not supported	Supported
<b>Integration capability to custom systems (Ensto API)</b>		Not supported	Not supported	Supported
<b>3<sup>rd</sup> party charging station OCPP1.6 –support</b>		Not supported	Supported	Supported
<b>SAP, building technology etc. integration capability</b>		Not supported	Not supported	Supported
<b>Order code</b>		<b>EVSER-A1038</b>	<b>EVSER-A1007</b>	<b>EVSER-A1028</b>

We are happy talk about EV Manager operation plans for 50+ chargers.

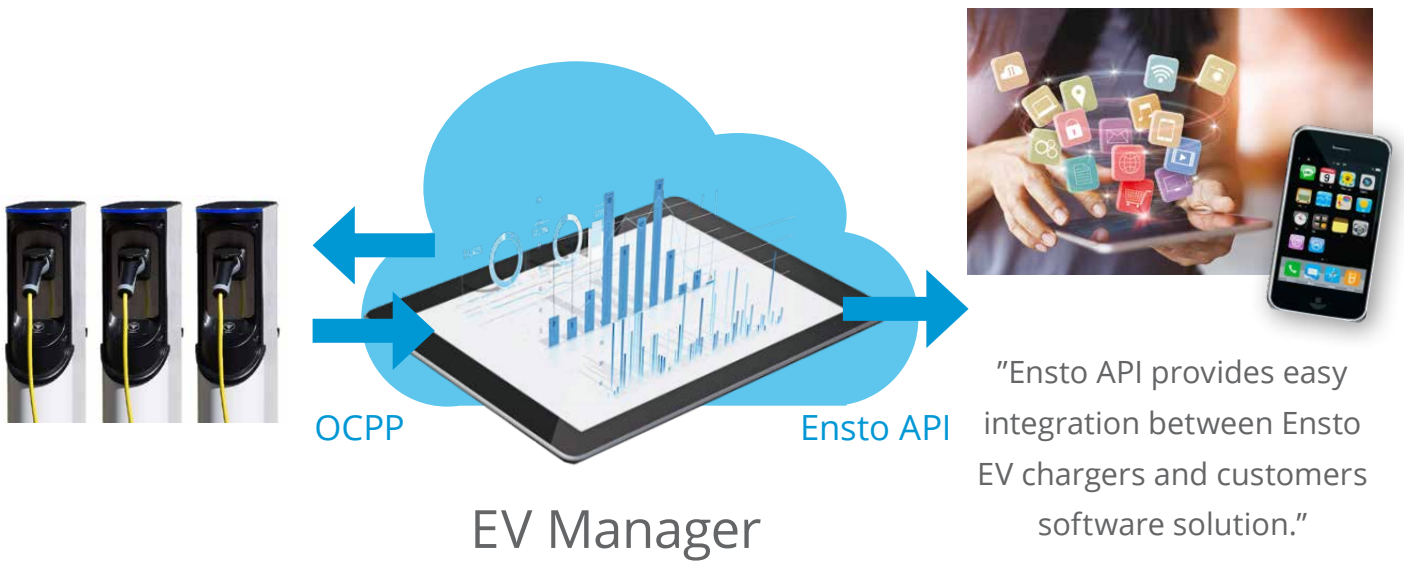


# Easy connections to charging station



“EV Manager Dynamic Plan users get Ensto API for free.”

## Manage your charging stations and users through EV Manager or simply use Ensto APIs







# ENSTO

Ensto Chago Oy  
Ensio Miettisen katu 2  
P.O.Box 77  
06101 Porvoo, Finland  
ensto@ensto.com

[ensto.com](http://ensto.com)

